

MODEL ELECTRIC MINISHEAR

The electric minishear is designed cut various kinds of dress material, such as cloth leather, and plastics films etc. the following directions for user should be read before operation.

1. Sharpener Button: Give a light press to this button and the sharpener will sharpen the cutting edge, in case the edge becomes blunt obviously during the operation. Caution should be used not to exercise any heavy press, which may cause the cutting edge to yield burs.

2. Grinding Wheel: It may become blunt with foreign matters and dirty adhering onto its surface. In such a case, the dirt should be brushed away and cleaned with the cleaner or alcohol in order to keep the grinding wheel sharp.

3. Upper cutting Blade: There are types of upper cutting blade available for cutting out different dress materials. There are made in the shape of hexagon, octagon and circle, when the cutting blade has worn to 42mm in diameter, it must be replaced with a new one by removing the clamping screw.

4. Swing lubrication: It is provided with a small oil hole for putting some drops of machine oil once a day to reduce the friction between the shearing surface.

5. Carbon Brush: when the brush has used for 200 hours, showing itself worn down to less than 4mm, it need replacing with a new one.

6. The cutting blade should be lubricated with the machine oil of 3.0# once a day.

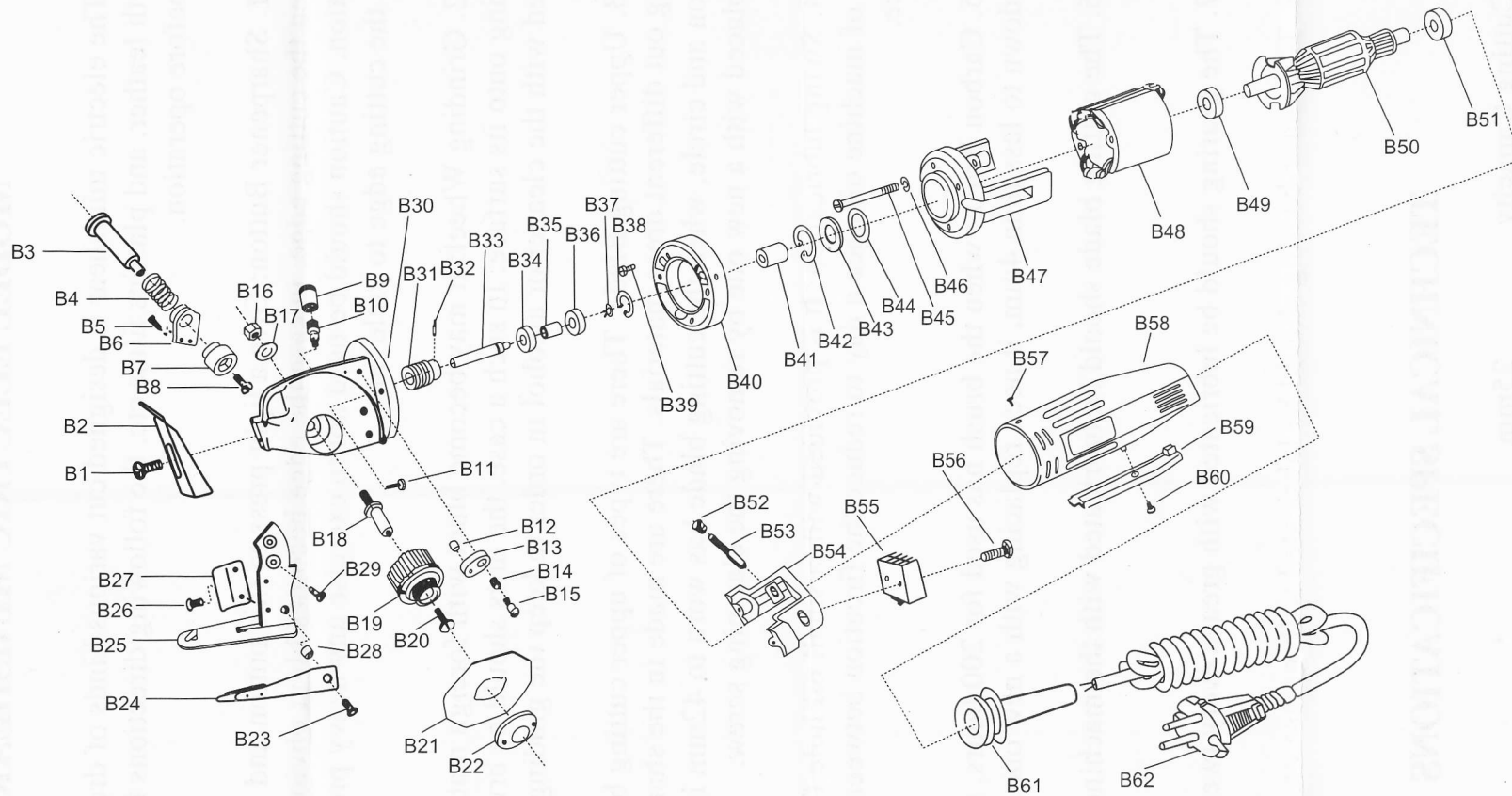
7. The gearing should be lubricated with grease every twenty days.

8. The motor-bearing should be lubricated with grease once a year.

TECHNICAL SPECIFICATIONS

Max Cutting Capacity	25mm
Rating Power	150W
Rating Voltage	110V / 220V
Net Weight	1 KG

SPARE PARTS OF MINIATURE ROUND CUTTING MACHINE



B1 screw	B6 grinder frame	B11 screw	B16 screw cap	B21 knife blade	B26 screw	B31 worm rod	B36 bearing	B41 connector	B46 spring	B51 bearing	B56 screw	B61 wire cap
B2 guard holder	B7 Emery-wheel	B12 lubricating cotton	B17 washer	B22 knife cover	B27 cloth sharpener	B32 pin	B37 outer lock ring	B42 inner lock ring	B47 front motor	B52 carbon brush	B57 screw	B62 attachment wire
B3 grinder roa	B8 screw	B13 lubricator	B18 worm gear oil	B23 screw	B28 washer	B33 worm shaft	B38 Inner lock ring	B43 washer	B48 stator	B53 carbon brush	B58 motor cover	
B4 spring	B9 oil cup	B14 spring	B19 worm gear	B24 lower knife	B29 screw	B34 bearing	B39 screw	B44 washer with wave	B49 bearing	B54 rear motor	B59 on-off set	
B5 screw	B10 oil tube	B15 screw	B20 screw	B25 pressure foot	B30 machine head	B35 washer	B40 connecting stand	B45 screw	B50 rotor	B55 switch	B60 screw	